

Fig. 5 Drawing the left front corner of your house

9. Based on the survey information, place the 0 end of the scale next to the mark you made. Measure along the pencil line the distance shown on the survey (for example, 20 feet). You now have the front line of your house.



Fig. 6 Drawing the front of your house

10. From this line you can draw the rest of the house, using the distances shown on the survey.

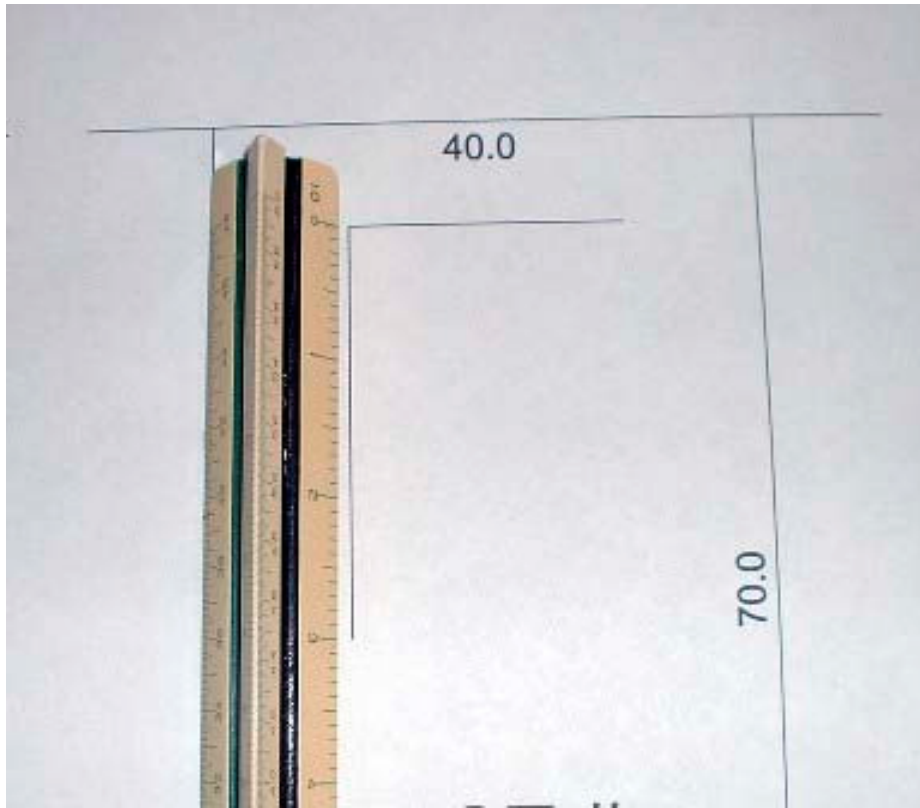


Fig. 7 Drawing the rest of your house

11. Pencil the lines lightly first so that any mistakes can be easily erased. Darken with a pen after you've finished the drawing. Show existing house lines as \\\\\\\; new construction as solid lines; and fences as ---x---x---. The example below shows a new back yard fence and a new deck.

NOTE: Data shown for Assessment and Taxation Lots or Parcels are in accordance with the records of the Department of Finance and Revenue, Assessment Administration, and do not necessarily agree with deed description.

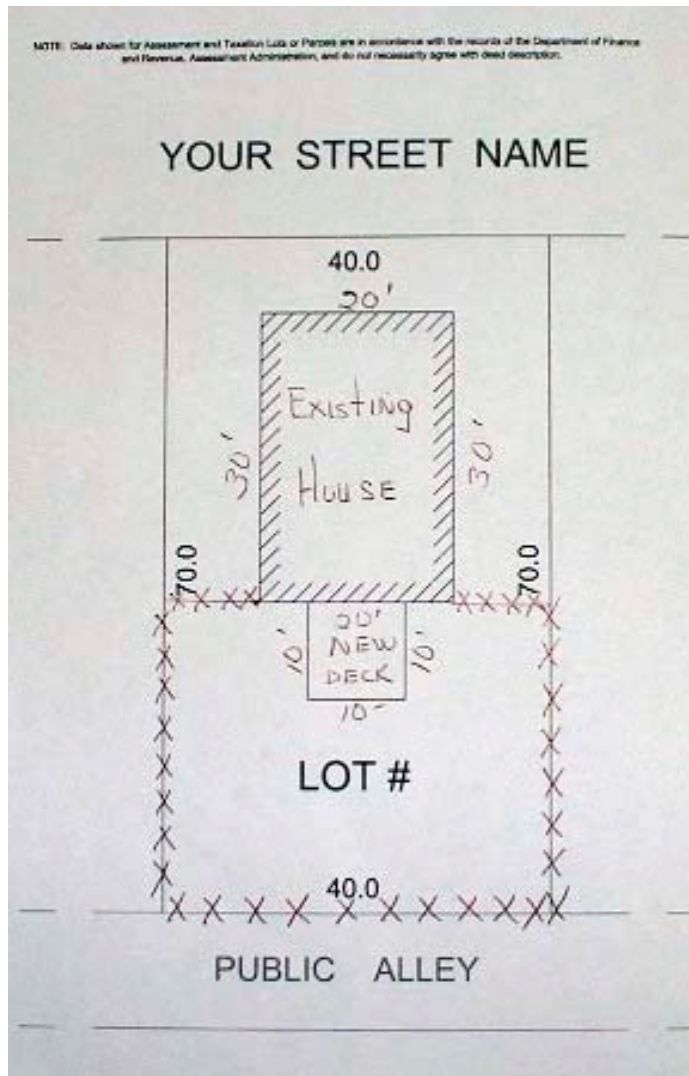


Fig. 8 Completed plat map

12. You need three copies of the completed plat map for most permits. You may want to draw on one plat and make copies. (A copy machine in the Office of the Surveyor prints paper sizes up to 11" X 17" for \$1.00 per copy.)

Revised 12-10-06